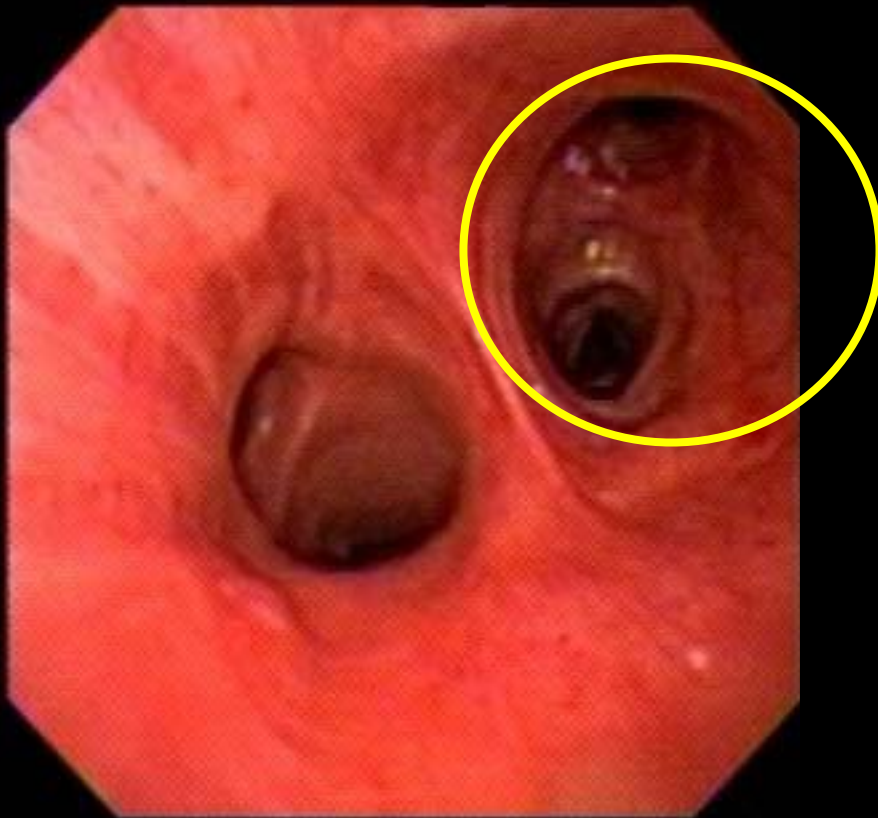
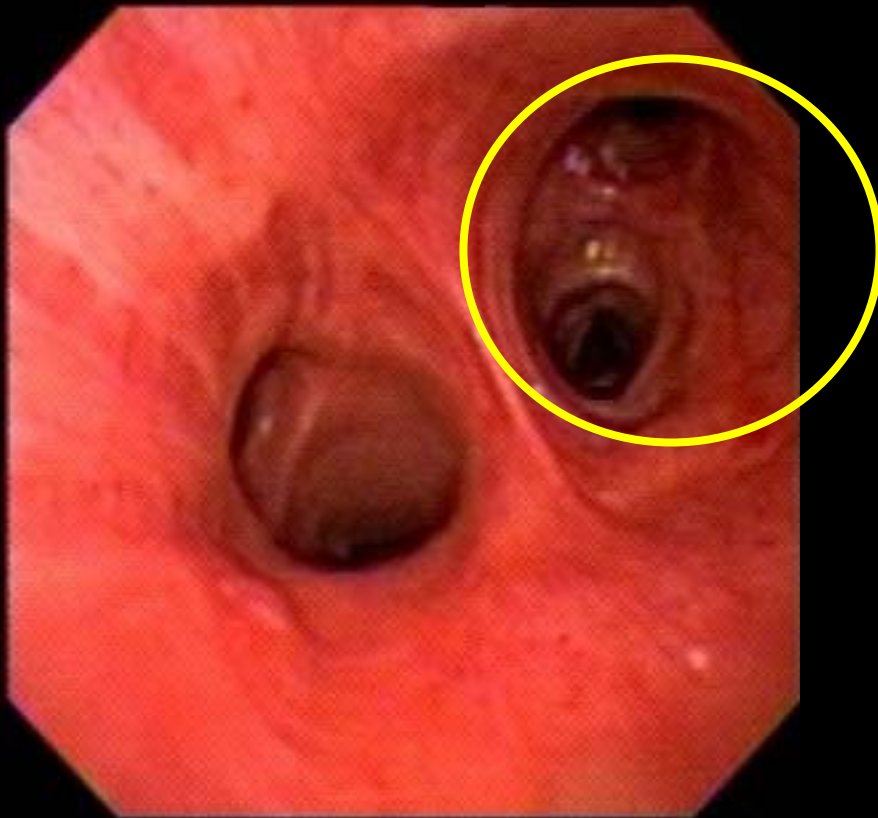


The Structure Seen in the Yellow Circle is?



- A. Right Bronchus intermedius
- B. Left upper lobe bronchus
- C. Left mainstem bronchus
- D. Right middle lobe bronchus
- E. Right upper lobe bronchus

The structure seen in the Yellow circle is?



- A. Right Bronchus intermedius
- B. Left upper lobe bronchus
- C. Left mainstem bronchus
- D. Right middle lobe bronchus
- E. Right upper lobe bronchus